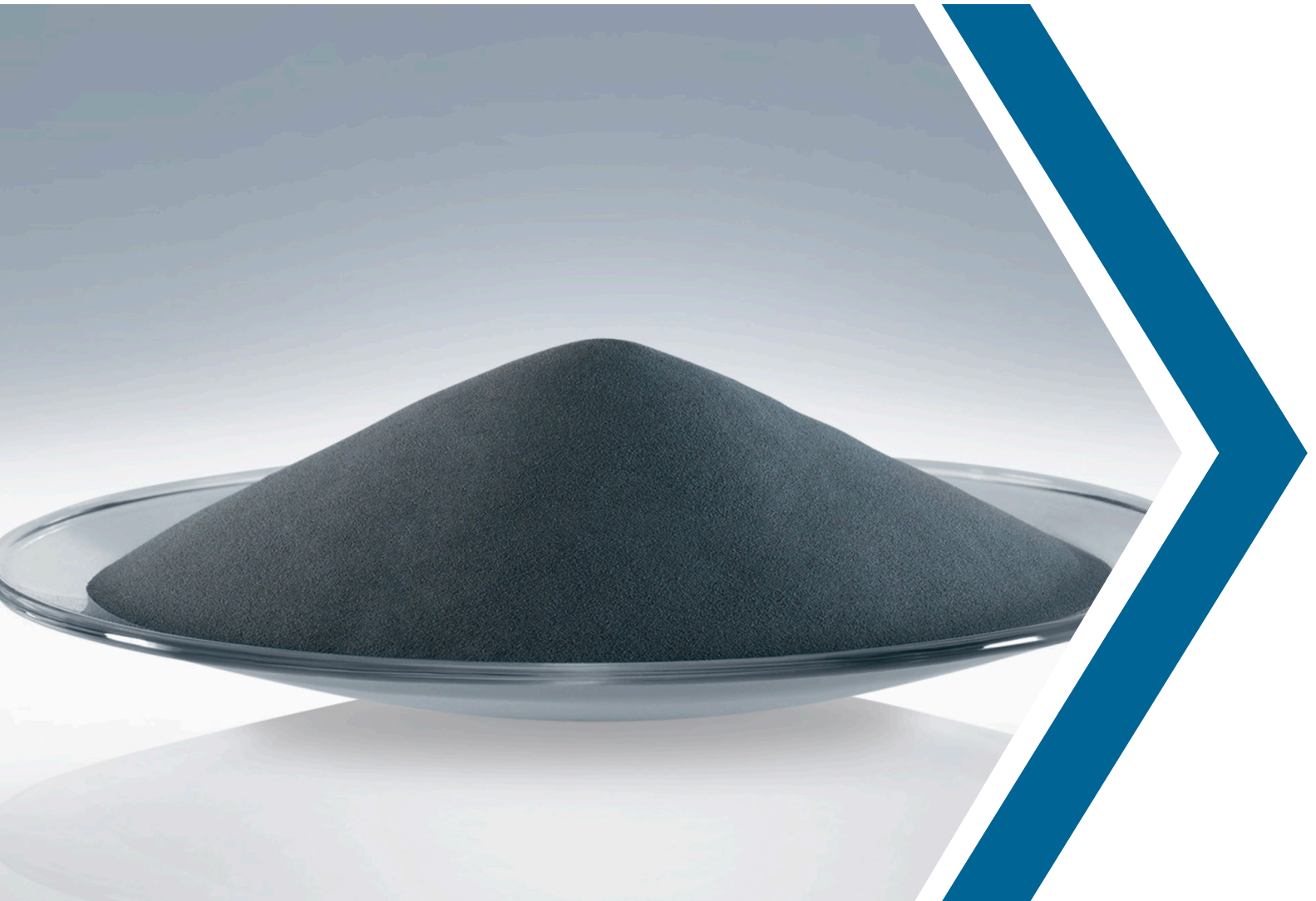


THERMAL SPRAYING WITH MOLYBDENUM POWDERS



Innovation is the key to Elmet Technologies' success in developing the highest quality molybdenum powders for thermal spray applications. Our molybdenum thermal spray powders are spherical, flowable and designed to improve and restore surfaces from large area coatings to small metal components.

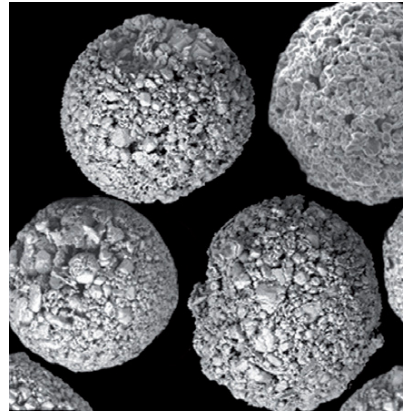
Elmet Technologies' Thermal Spray Powder Advantage

Elmet Technologies' molybdenum thermal spray powders extend the life of products by repairing worn and damaged surfaces, and protecting against the detrimental effects of erosion, wear and corrosion. Our thermal spraying powders involve the disposition of powders covering a substrate forming an even coating of contiguous layers.

Diverse Spraying Processes

- > Plasma
- > Flame
- > Detonation
- > High velocity air fuel (HVOF)
- > High velocity oxy-fuel coating spraying (HVOF)

Spray Dried Powder



Spherical and flowable

Applications

From popular transportation modes like automobiles, trains, aircraft and boats to chemical plants, food manufacturing and packaging, mining, earthmoving

equipment, power generation and many applications that are subject to usage and environmental effects



MOLYBDENUM THERMAL SPRAY POWDERS

Pure molybdenum powder for various size specifications.

- > Coarse Grade -170+325 mesh
- > PWA 1313 -200+325
- > Finest – PWA 1338
- > Fine Grade -325 mesh

We can also alloy with carbon to produce any level of C content up to 6% (pure Mo₂C).

Additional customized alloy powder products are available upon request.

Packaging

The molybdenum powder is shipped in non-returnable polyethylene-lined 20 liter (5 gallon) plastic pails or 60 liter (15 gallon) steel drums. Special packaging inquiries welcome.

CHEMICAL CHARACTERISTICS¹

Mo (excluding gases) min 99.8 %

¹ Mass fraction in % [cg/g]; ppm [µg/g]

PHYSICAL CHARACTERISTICS

Apparent Density 30 g/cubic inch minimum

Hall flow 35 s/50 g maximum

ELMET
TECHNOLOGIES

ELMET TECHNOLOGIES

1560 Lisbon Street • Lewiston, Maine 04240

P +1.207.333.6100

sales@elmettech.com

www.elmettechnologies.com

The conditions of your use and application of Elmet Technologies products, technical assistance, and information (whether verbal, written or by way of production evaluations), including any suggested formulations and recommendations, is your responsibility. Therefore, you are encouraged to test our products and review any technical assistance and/or information you may receive from Elmet Technologies with your own resources, and determine to your own satisfaction whether Elmet Technologies products are suitable for your intended uses and applications. This application-specific analysis should include at minimum testing to determine suitability for the intended use from a technical as well as health, safety, and environmental standpoint. Any technical assistance and/or information provided by Elmet Technologies is given without any express or implied warranty or guarantee. You agree and understand and hereby expressly release Elmet Technologies from all liability, in tort, contract or otherwise, incurred in connection with the use of our products, technical assistance and/or information, except as may be contained otherwise in a written agreement between you and Elmet Technologies. Any statement or recommendation not contained herein or in a written agreement between you and Elmet Technologies is unauthorized and shall not bind Elmet Technologies. Nothing herein shall be construed as a recommendation to use any Elmet Technologies products in a manner violative of the intellectual property rights of any third party. No license is implied or granted under or to Elmet Technologies intellectual property. All product deliveries are based on the then current product specification and Elmet Technologies' Conditions of Sale. IN NO EVENT WILL ELMET TECHNOLOGIES BE LIABLE FOR INCIDENTAL OR CONSEQUENTIAL DAMAGES.